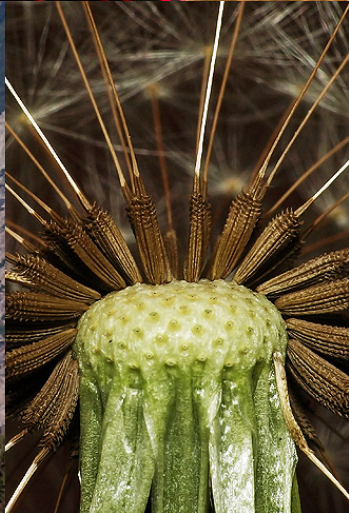




TOPAZ InFocus

QUICK START GUIDE

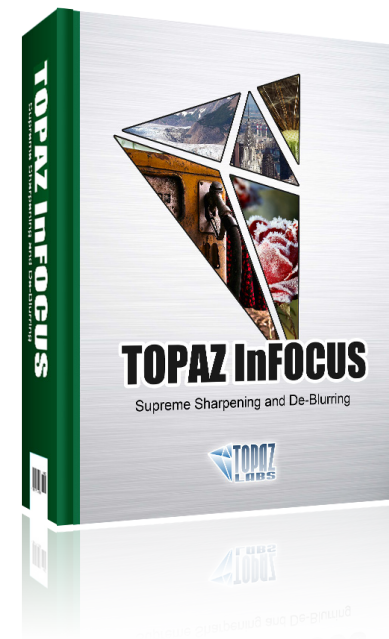


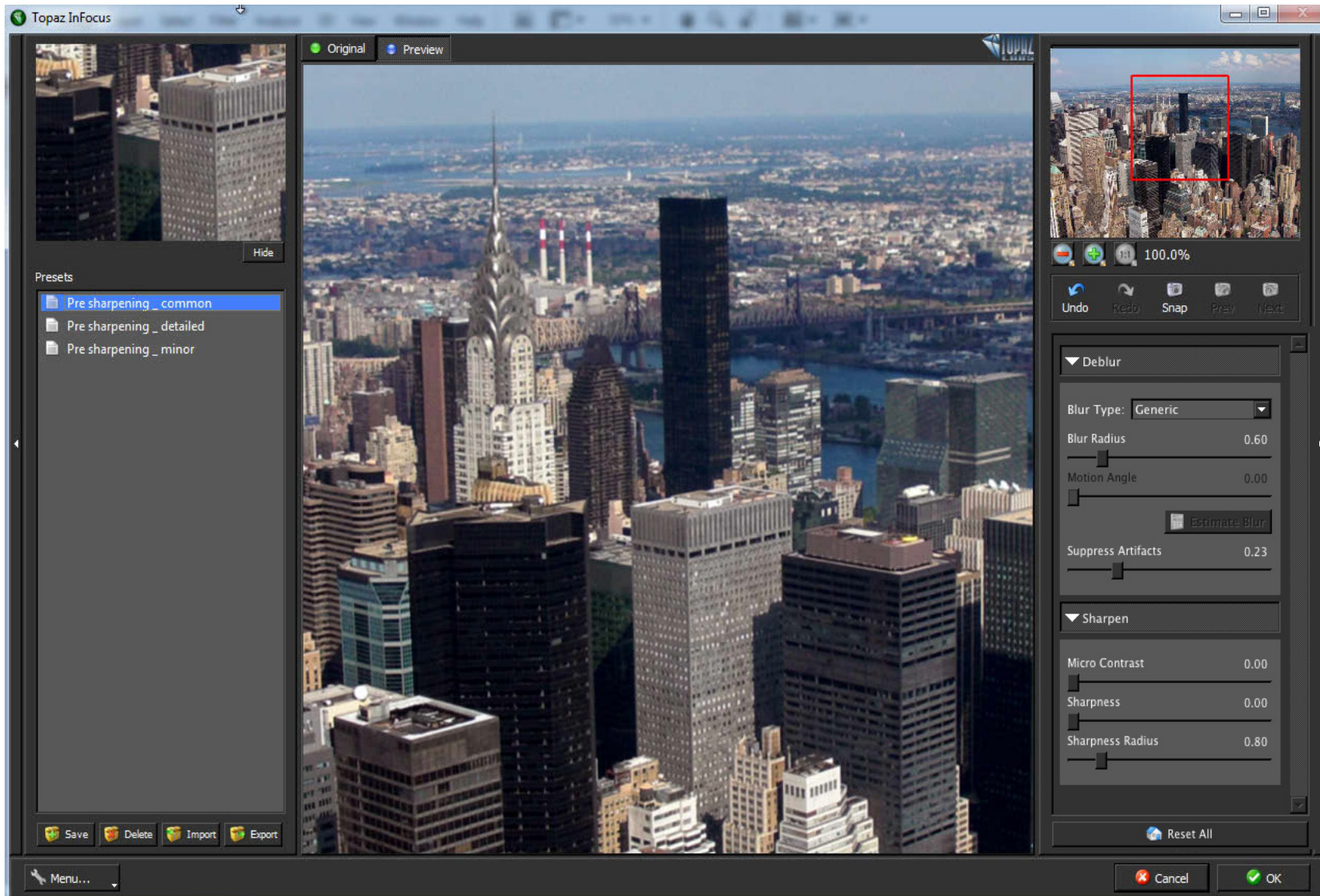
Topaz InFocus uses the most recent image sharpening technology to provide unparalleled, intuitive detail refinement. It is the ultimate tool for superior sharpening, as well as de-blurring out-of-focus and motion blurred images.

With Topaz InFocus, you gain revolutionary image clarity simply and effectively. Whether refining fine image features or rescuing a previously unusable out-of-focus image, Topaz InFocus is the most advanced, yet user-friendly, solution to your sharpening needs.

Here are some just some of the useful features in InFocus:

1. **DeBlur Tab.** Multiple sliders included to control generic, out-of-focus and motion blur.
2. **Sharpen Tab.** Multiple sliders included to control sharpening and micro-contrast detail enhancement.
3. **Estimate Blur Button.** Automatic estimation option for unknown or complex blur types. (MUST be in Unknown/Estimate blur type to access. Please see pages 25-26 of the InFocus User Guide for information regarding this feature.)
4. **Auto Updater.** Get software updates instantly.
5. **Snap / Recall buttons.** Save up to 99 snapshot settings for comparison.
6. **Undo / Redo buttons.**
7. **Collapsible side panels.** Expand and collapse the preset and tool panel for an adjustable workspace.
8. **Preset Enable / Disable option.** Option to enable or disable the preset preview processing at program startup.
9. **Preset Navigation.** Use the up / down arrow keys to navigate the preset list and display the selected preset thumbnail (in preset preview window). Use the return (Enter) key to apply the currently selected preset.
10. **Enable / Disable Tool Tips.** Option to enable or disable the pop up tool tips.
11. **Quick Slider Reset.** Double click on the slider name to reset default slider values.





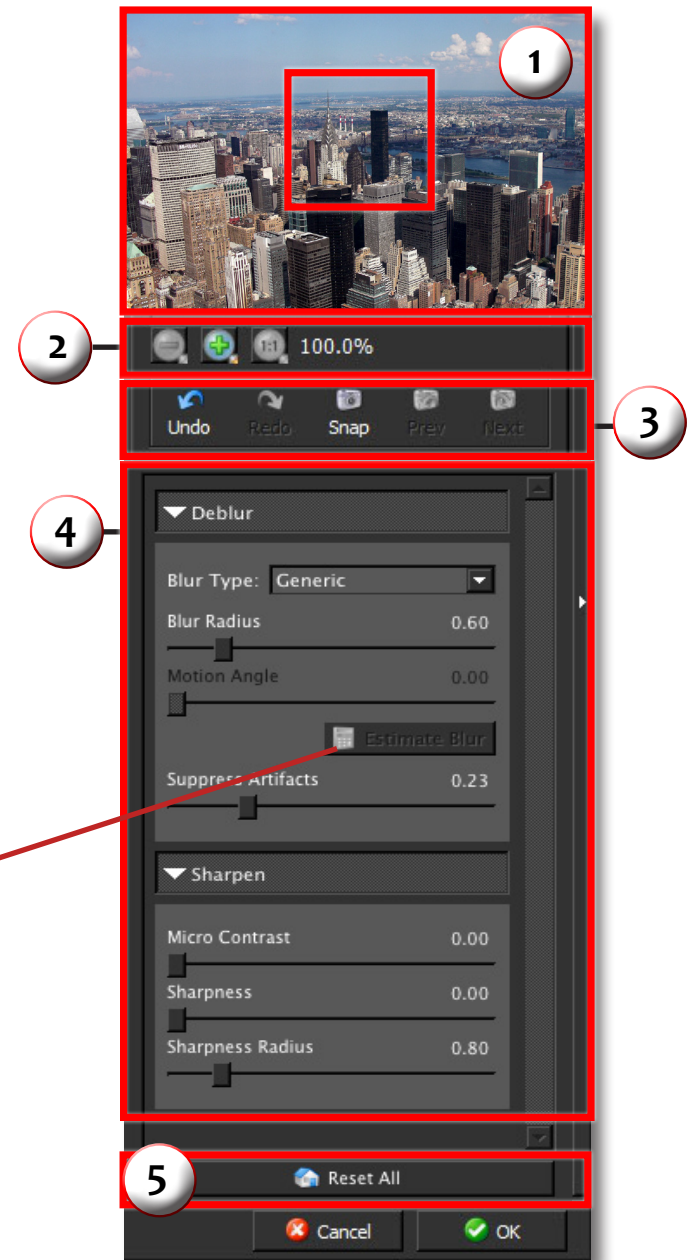
Topaz InFocus features a great interface and easy to use tools.

1. **Preview Navigator** - Displays the region of the preview image you are currently focused on.
2. **Zoom** - Allows you to zoom in and out of specific areas of your image to allow for more precise selections.
3. **Undo / Redo; Snap / Recall** - Allow you to undo or redo previous steps. Save up to 99 snapshot settings for comparison.
4. **Sliders Parameters** - Controls the editing process using sliders to adjust the various effects.
5. **Reset All** - Allows you to reset all of the sliders in all of the tabs to zero.

Note: The Estimate Blur button is only an option when the Unknown/Estimate blur type is chosen.

If any other blur type is chosen, the Estimate Blur feature is not available.

Important! The Blur Radius and Edge Softness parameters must be set BEFORE the Estimate Blur button is selected. Each time either of these settings are changed, the Estimate Blur button MUST be selected again for the changes to take effect. Please see pages 25-26 of the InFocus User Guide for information regarding this feature.



Presets are a great way to speed up and simplify the whole process of using Topaz InFocus. Presets are set previews with previously defined settings that you can recall and reapply at any time.

We've included some default presets for you and, although they won't work for every single photograph, they serve as excellent starting points for customized tweaking.

1. Presets Preview

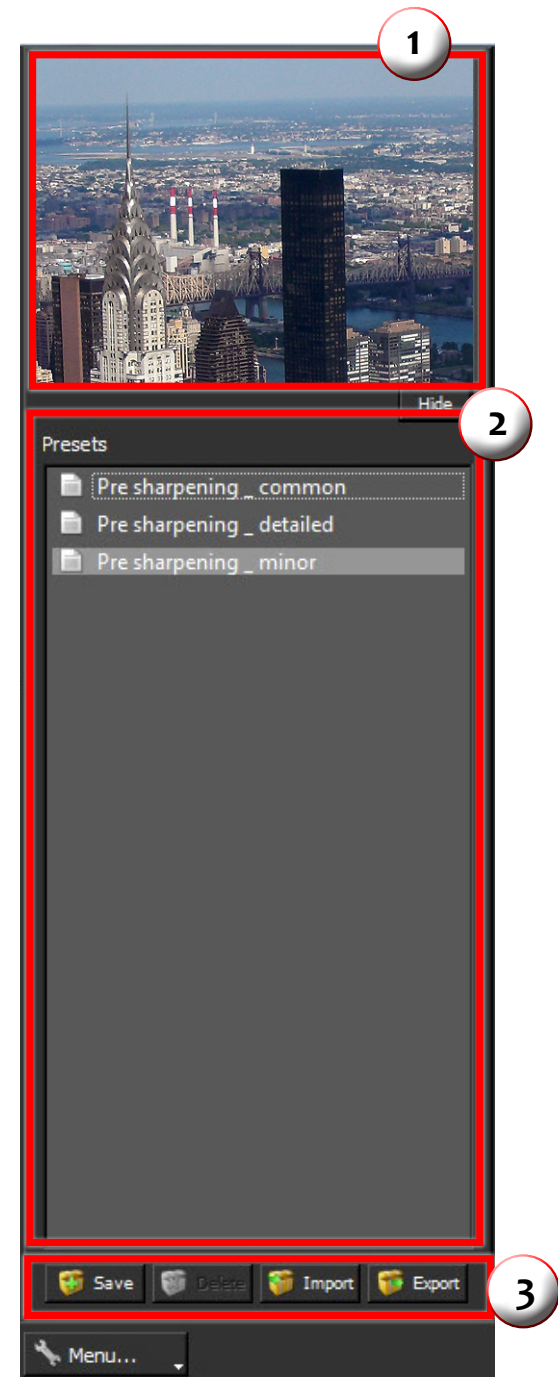
Provides “snapshots” of the available pre-defined parameter settings included in the presets list below.

2. Presets List

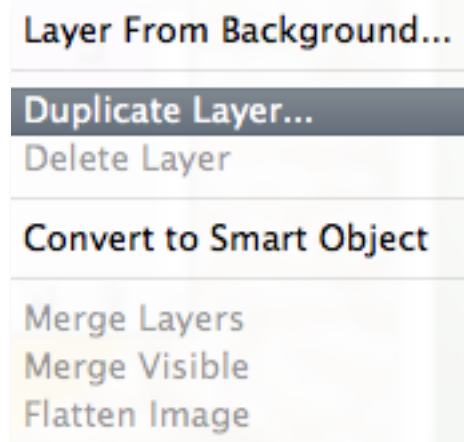
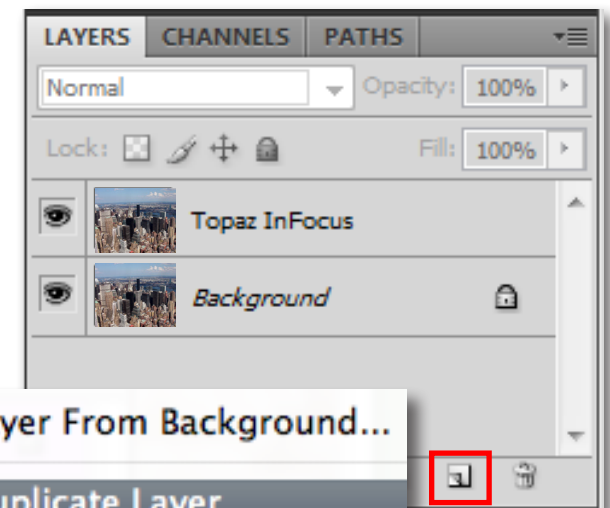
Lists all of the saved presets available for use.

3. Preset Options

The preset options allow you to save your presets, delete presets (default presents cannot be deleted), import new presets and export your saved presets to share with your friends.

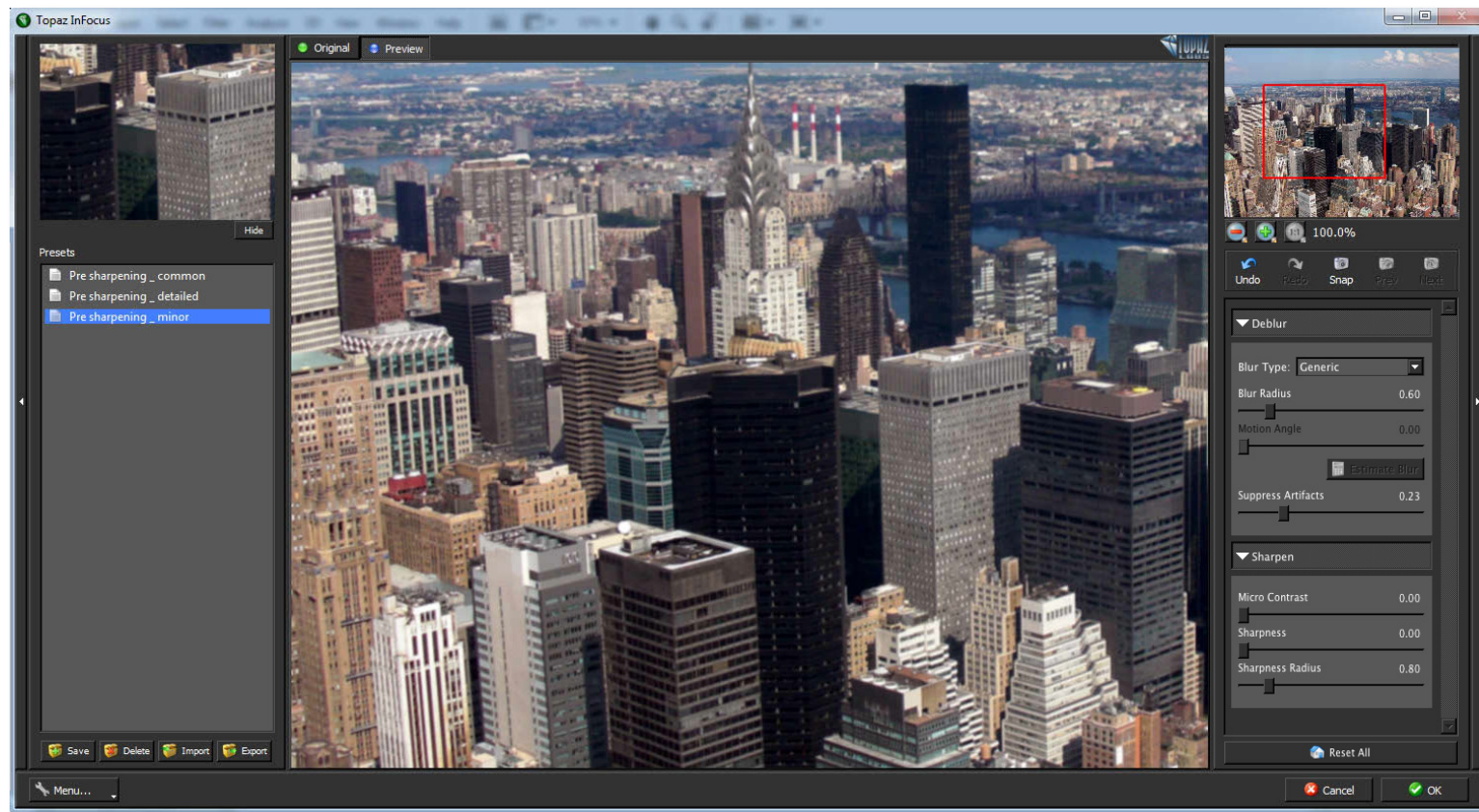


Open an image in Photoshop. Duplicate your background layer. Right-click on your image layer in your layers and select “Duplicate Layer”. You can also achieve this by selecting your image layer and dragging it down to the new layer icon. Then go to Filter -> Topaz Labs and select InFocus.



Once your InFocus interface opens you can start making your adjustments. If desired, you can select one of the default presets to use as a starting point and then make additional manual adjustments from there to perfect your image look.

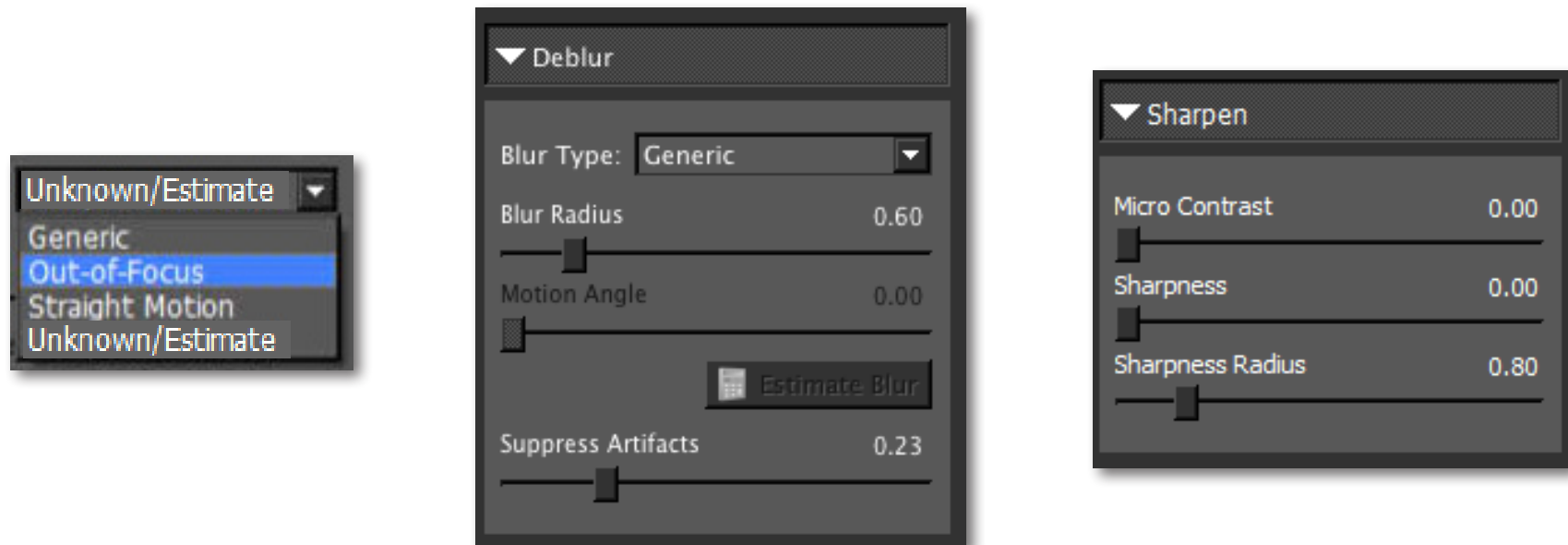
For this example we want to gain overall image clarity and enhance the details and lines in the cityscape. First, we will be trying the Presharpening - Minor preset first. When that preset is determined to not be strong enough, we try the Presharpening - Common setting.



If you are satisfied with the preset adjustments then you can click “OK” to process your image and save it back to Photoshop.

If you would like to make some additional adjustments to your InFocus settings then you can do so by adjusting any of the sliders in the two tabs manually until you achieve your preferred image results.

Start in the Deblur tab, choosing the Blur Type found in your image. Because this image is slightly out-of-focus, we will choose the Out-of-Focus option. Minor adjustments and sharpening needs are usually best achieved with the Generic blur type. The Blur Radius is the main slider that you will use to improve your image. Slowly adjust the slider until satisfied with the result. For this example we will slightly increase the Suppress Artifacts sliders. When you are happy with the settings in the Deblur tab, you can move on to the Sharpen tab. For this image, we will slightly increase the Micro Contrast slider, enhancing structure details.



And that's it! You can now select OK to process your image and watch it transform.



Before Topaz InFocus



After Topaz InFocus

This Topaz InFocus Quick Start Guide is for users who are familiar with the image enhancement process and who want to jump straight into using Topaz InFocus.

For a more in-depth and comprehensive break down of using Topaz InFocus please view the Topaz InFocus User Guide.

The User Guide was automatically installed on your computer when you installed Topaz InFocus.

Here is how to access it:

MAC: HD -> Library -> Application Support -> Topaz Labs -> InFocus -> Docs

WINDOWS: Computer -> C: -> Program Files -> Topaz Labs -> Topaz InFocus -> Docs

You can also watch video tutorials online at: <http://www.topazlabs.com/tutorials/InFocus>



Topaz InFocus uses some shortcut keys to speed up your workflow. Many of these keys are similar to those in Photoshop. The following keys work at all times.

Action	MAC Shortcut	PC Shortcut
View Original Image	Spacebar	Spacebar
Reset All	CMD-ALT-R	CTRL-ALT-R
Zoom to Fit	CMD-o	CTRL-o
Zoom to 100%	CMD-ALT-o	CTRL-ALT-o
Zoom In	+ or CMD - +	+ or CTRL - +
Zoom Out	- or CMD - -	- or CTRL - -
Undo	CMD -Z	Ctrl - Z
Redo	CMD - Shift - Z	Ctrl - Shift - Z

ADDITIONAL SHORTCUTS

Action	Shortcut
B	Expands / Collapses Deblur Tab
CMD-Shift-S (Mac) / Ctrl-Shift-S (PC)	Expands / Collapses Sharpen Tab
Left or Right Arrow Key	Scrolls through presets
Return (enter) key	Applies selected preset
[key	Reduces selected slider value by 0.1
] key	Increases selected slider value by 0.1
Home Key	Set the slider value to minimum
End Key	Set the slider value to maximum
Double-click slider name	Resets the slider value to 0



Check out our new **Forum** and our **blog** for tutorials, tips and updates from Topaz Labs!



Follow us on Twitter for notifications of recent news and easily get in touch with us whenever you feel like it!



Find us on our Facebook page and network with other Topaz users!



Participate in the entirely user-led Topaz Flickr group for a helpful and highly active community for Topaz Photoshop plug-ins!



Subscribe to our YouTube channel to keep up with any newly released product video tutorials!